

Attenuators

FIXED ATTENUATORS

- 2 to 5 Watts Average Power Rating
- SMA or Type “N” Connectors



SPECIFICATIONS

Low Power / SMA Connectors

FREQUENCY RANGE (MHz)	MODEL NO.*	ATTENUATION dB		POWER INPUT		VSWR (Max)	WEIGHT	
		NOMINAL	DEVIATION	AVG. W (Max)	PEAK kW (Max)		Oz	Gr
DC-6000	4774	3, 6, 10, 20	±0.3	4.0	0.2	1.25	0.5	14
		30	±0.5	4.0	0.2	1.25	0.5	14

Low Power / SMA Connectors

FREQUENCY RANGE (MHz)	MODEL NO.*	ATTENUATION dB		POWER INPUT		VSWR (Max)	WEIGHT	
		NOMINAL	DEVIATION	AVG. W (Max)	PEAK kW (Max)		Oz	Gr
DC-6000	4772	3, 6, 10, 20, 30	±0.3	2	0.2	1.25	0.5	14
		40	±0.5	2	0.2	1.25	0.5	14
		50, 60	±0.75	2	0.2	1.25	0.5	14

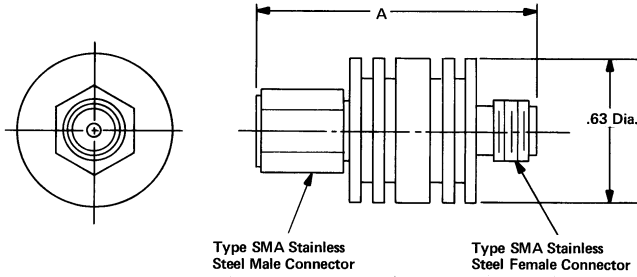
Low Power / Type “N” Connectors

FREQUENCY RANGE (MHz)	MODEL NO.*	ATTENUATION dB		POWER INPUT		VSWR (Max)	WEIGHT	
		NOMINAL	DEVIATION	AVG. W (Max)	PEAK kW (Max)		Oz	Gr
DC-3000	752	3, 6, 10, 20, 30	±0.3	5	0.3	1.20:1	3.7	105

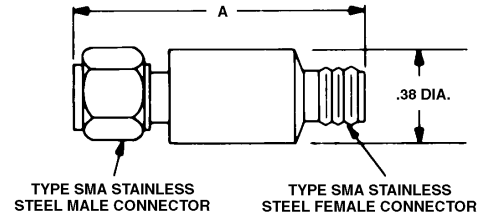
*State model number followed by attenuation (e.g., XXX-3 for 3 dB attenuator).

Attenuators

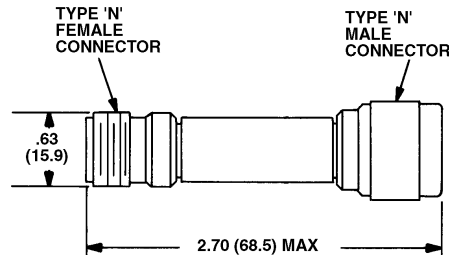
OUTLINE DRAWINGS



MODEL NO.	A MAX 3-20 dB	A MAX 30-60 dB
4774	1.28	1.49



MODEL NO.	A 3-20 dB	A 30-60 dB
4772	1.28	1.49



752